



Round Base 38"

- Designed for smaller drains, such as yard inlets, golf course drains, landscape drains, beehive drains, and drywells that are 30" or less.
- Reusable high molecular weight polyethylene frame with replaceable filters.
- Consistent performance retaining sediment from concentrated flow.
- Can help prevent filling of drywells with sediment and leaves.
- Fast, simple installation and economical

Structural Integrity – Stormwater Release – Sediment Retention



Two Replaceable Filter Options

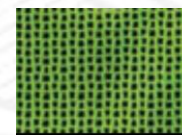


2 STAGE Filter

- Superior sediment filtration in slurry conditions
- Used during construction to keep sediment out of drains and small inlets.
- Stage 1 - Sediment filtration (exceeds 96% efficiency)
- Stage 2 - High flow fabric top for stormwater release
- High visibility top marks inlet location



Stage 1



Stage 2

High Flow Filter

- Keeps trash, grass & floatables out of pipe system
- Clear water flow >1100 gpm/ft²
- Effective when high flow of water is expected to help prevent flooding