



# Installation Instructions: Low Velocity Ditch Check Kit

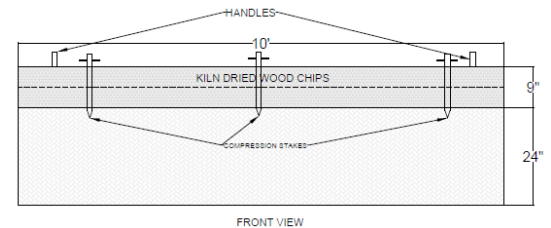


## Kit includes:

1. Low Velocity Ditch Check with attached front water seal and rear scour guard
2. 3 compression stakes
3. 16 sod staples

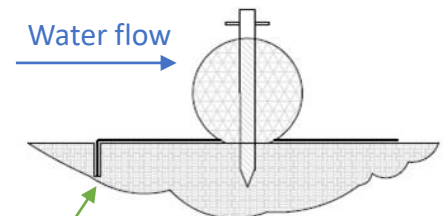
## Step One

- Lay preassembled check dam into ditch. Installation should be perpendicular to channel flow.
- Center of Low Velocity Ditch Check should be in center of ditch.



## Step Two

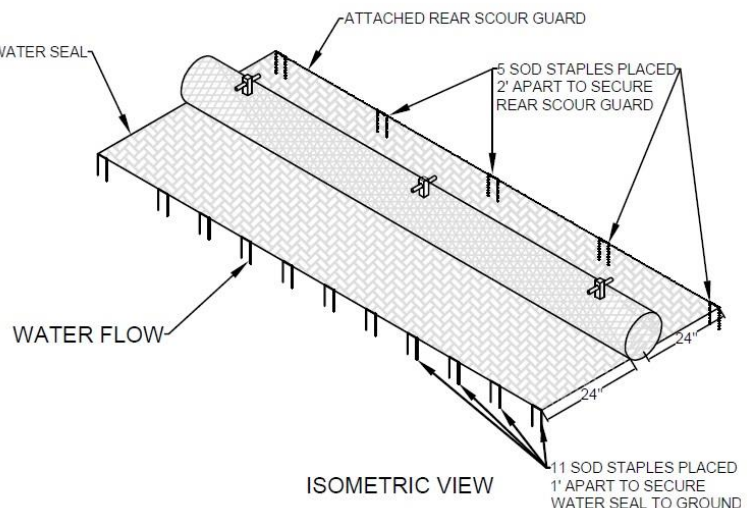
- Align center stake with center of ditch, drive through the LVDC. It may be necessary to cut an entry hole in the fabric for the stake.
- Drive the other two stakes approximately 1.5 from ends



Bury and compact the front water seal 4"  
Use sod staples to staple into the ditch

## Step Three

- Dig a 4" deep trench bury and compact the front water seal into the trench.
- Sod staple every 12" into the trench. As shown.
- Sod staple the back side every 24" as shown.



If you have any questions, please call  
770-388-7818.