



# S400BF-DOT

## For DI 5 series

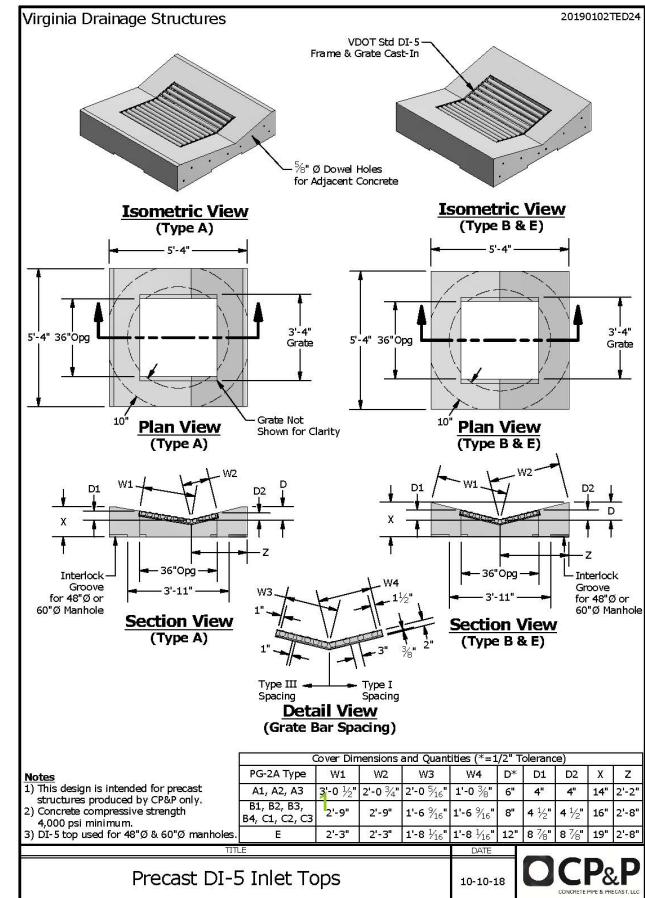
### Precast Inlet tops

### Installation Instructions

Assembly Part Number: **S400BF-DOT**  
 Is designed to fit DI-5 Series Inlet Caps



When needed Replacement Filter  
 is Part # **S440BF-DOT**



## Step One

Place DI (Drop Inlet) cap onto DI.



Actual DI photo  
(Drop Inlet)



In field DI Photo  
(Drop Inlet)

## Step Two

Unpack Lower section of Silt Saver **S400BF-DOT Assembly**



## Step Three

Place Lower section of Silt Saver **S400BF-DOT** Frame onto the DI and unfold side grids.



## Step Four

Place Dome section of Silt Saver **S400BF-DOT** Frame onto the Lower section. Corners are fitted.



Photo of DI-5 simulated inlet

## Step Five

Place filter S440B-DOT Over Frame onto Frame.

NOTE: LONG FLAPS COVER SIDE GRIDS.



## Step Six

Fold material over side so sediment can't go in the sides (Hospital Corners)

NOTE: Please Pay Attention to this step.



Proper Appearance  
of **S400BF-DOT**  
Assembly on DI

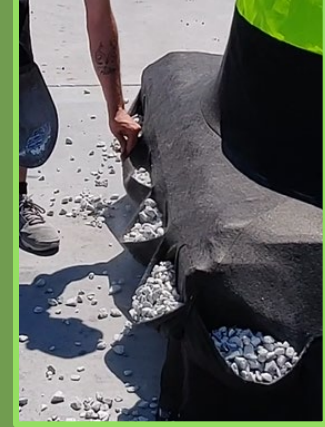


Photo of DI-5 simulated inlet

## Step Eight

Fill Filter pockets with gravel.  
Start with corners.

Then fill rest of pockets



## Step Nine

Cover long Filter Flaps with  
Gravel



Photo of DI-5 simulated inlet

## Step Ten

Finish installing the inlet by  
placing dirt around sides.

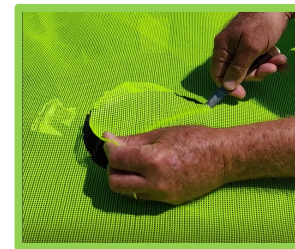
Install inlet →



## Step Eleven

Cut the Inspection and Removal  
hole out of the top of the filter.

Inspection and removal  
hole



When needed Replacement Filter  
is Part # **S440BF-DOT**