



Installation Instructions: Installing Preassembled WBSF Products using "Trenching Method"

Step One

Cut a trench 4" wide and 8" deep.



8" Deep

4" Wide

Step Two

Pull fence along side of trench. Ensure that the material faces the direction of sediment flow.



WBSF2S & WBSF2CB are fan folded.
WBSFSD is rolled.

Step Three

Place post to the back side of trench.



Back side of trench.

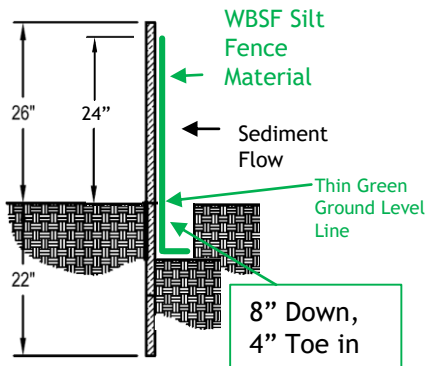
Sediment Flow

Note:
When two rolls meet, twist posts and drive into trench.



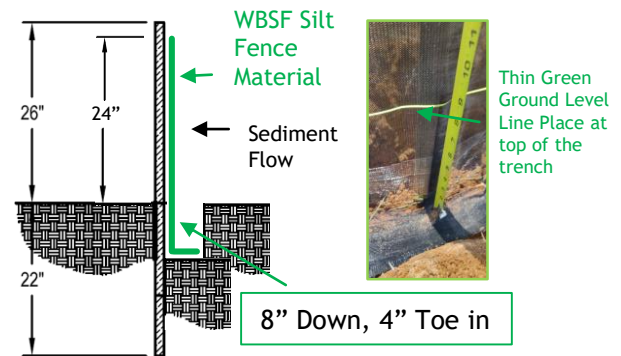
Step Four

Drive the Post into trench until Ground level line is even with the top of the trench.



Step Five

Place the WBSF Fabric into the trench. Ensure the fabric goes 8" down and 4" across in an "L" pattern. Keep ground level marker at top of trench.



Step Six

Compaction of soil is critical to ensure proper site protection.

Fill and compact both sides of the silt fence.

