



Installation Instructions: Attaching Metal Posts to the WBSF Line of Products using "Slicing/Plow Method"

Silt fence slicer/plows are a time saving method of installation. WBSF Line (woven belted silt fence) of Silt Fence can be installed using a slit fence plow/slicer. To be effective the soil must be mostly free of rocks and roots.

Step One

Plow/Slice WBSF material into ground. Ensure the "Ground Indication line" is maintained at ground level.



Ground level indication line

Step Two

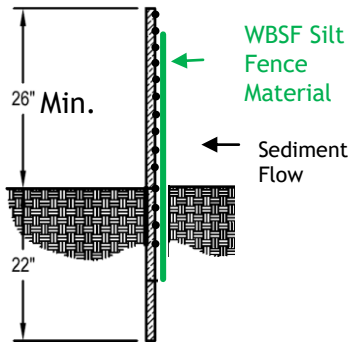
Compaction of soil is critical to ensure proper site protection.

Fill and compact both sides of the silt fence.



Step Three

Drive the metal t-post into the ground 22".



Step Four

Use an Awl to separate the threads of the fabric on the top left and bottom right of the woven belts. **Do not cut fabric.** Slide 8" Black UV 120lb tensile strength Zip Tie through the holes and around post. Ensure that the zip tie is between two of the post bumps. Secure tightly.



Step Five

Repeat for each of the four belts.

Attachment and Linear Support Belts

