



**Performance Based Sediment & Erosion Control Products**



1200 Forrester Cemetery Rd, Covington, GA 30014

[www.siltsaver.com](http://www.siltsaver.com) ☎ 770-388-7818

✉ [Info@siltsaver.com](mailto:Info@siltsaver.com)





# BSRF™ PRIORITY 1

Belted Silt Retention Fence – Priority 1  
**REINFORCED SILT FENCE**



## NON-WOVEN HEAVY-DUTY SILT FENCE

**(GREEN BAND)**

Designed for use in  
Heavy Duty Sensitive Areas

**48' PRE-STAKED ROLLS  
OAK / HARDWOOD POSTS  
SPACING AT 4' CENTERS**

### Structural Integrity – Stormwater Release – Sediment Retention

- 36" tall, non-woven spun-bond polyester fabric with an internal fiberglass scrim for added support
- Superior filtration in slurry conditions – exceeds Federal Guidelines with > 96% efficiency
- The continuous green band at the top of the fence, as well as a unique method of attachment (sandwiching the fabric between the wood post and a bonding strip) enhances the strength of the system





# BSRF™ PRIORITY 2

Belted Silt Retention Fence – Priority 2

PERIMETER PROTECTION – SILT FENCE

## NON-WOVEN MEDIUM-DUTY SILT FENCE

**(BLACK BAND)**

Designed for use in  
Medium Duty Sensitive Areas



**100' PRE-STAKED ROLLS  
OAK / HARDWOOD POSTS  
SPACING AT 6' CENTERS**

Structural Integrity – Stormwater Release – Sediment Retention

- 36" tall, non-woven spun-bond polyester fabric
- The continuous black band at the top of the fence, as well as a unique method of attachment (sandwiching the fabric between the wood post and a bonding strip) enhances the strength of the system
- Belt provides strong linear support & disperses weight between posts
- Superior filtration in slurry conditions - Exceeds 96% filtration efficiency



# WBSF™ STANDARD

Woven Belted Silt Fence (WBSF™)  
REINFORCED SILT FENCE  
Part# WBSFSD

## WBSF™ System

Five  
>350 lb. tensile  
strength belts woven  
into the fabric



### Structural Integrity – Stormwater Release – Sediment Retention

- Tough woven polypropylene geotextile that delivers consistent performance
- Internal belts used as attachment points allow fabric to hold maximum loads without additional reinforcement
- **Replacement for wire back silt fence**
- Belts provide linear support to disperse weight of stormwater and sediment over the full system.
- Enhanced durability reduces cost associated with replacement and repairs



Master Rolls	500'	1000'
No Splices - faster install	✓	✓
May be used with <b>Metal Posts</b>	✓	✓
May be used with <b>Wood Posts</b>	✓	✓

Pre-Assembled	48' Long	100' Long
<b>4' Centers</b> - Oak/Hardwood Posts	✓	
<b>6' Centers</b> - Oak/Hardwood Posts		✓





# WBSF™ 2 STAGE

Woven Belted Silt Fence (WBSF™)  
REINFORCED SILT FENCE  
Part# WBSF2S



## Structural Integrity – Stormwater Release – Sediment Retention

- Internal belts used as attachment points allow fabric to hold maximum loads without additional reinforcement - provide linear support to disperse weight of stormwater and sediment over the full system.
- **Replacement for wire back silt fence**
- 2 Stage technology reduces the potential for overtopping and undermining:
  - Stage 1 – Sediment retention (50 sieve, >80 gpm/ft<sup>2</sup> clear water flow)
  - Stage 2 – Stormwater release (>300 gpm/ft<sup>2</sup> clear water flow)

Master Rolls	500'	1000'
No Splices - faster install	✓	✓
May be used with <b>Metal Posts</b>	✓	✓
May be used with <b>Wood Posts</b>	✓	✓

Pre-Assembled	48' Long	100' Long
<b>4' Centers</b> - Oak/Hardwood Posts	✓	
<b>6' Centers</b> - Oak/Hardwood Posts		✓





# WBSF™ 2 STAGE COMBO

## WOVEN BELTED SILT FENCE (WBSF™)

### REINFORCED SILT FENCE

Part# WBSF2CB



**Combines 2-Stage silt fence with a high visibility delineation top in one fence. Installing one fence to do two jobs saves money!**

- Internal belts used as attachment points allow fabric to hold maximum loads without additional reinforcement - provide linear support to disperse weight of stormwater and sediment over the full system.
- **Replacement for wire back silt fence**
- The first stage above ground line is the high efficiency 50 sieve sediment retention stage
- 2 Stage technology reduces the potential for overtopping and undermining:
  - Stage 1 – Sediment retention (50 sieve, >80 gpm/ft<sup>2</sup> clear water flow)
  - Stage 2 – Stormwater release (>300 gpm/ft<sup>2</sup> clear water flow)

## Structural Integrity – Stormwater Release – Sediment Retention



Master Rolls	500'	1000'
No Splices - faster install	✓	✓
May be used with <b>Metal Posts</b>	✓	✓
May be used with <b>Wood Posts</b>	✓	✓

Pre-Assembled	48' Long	100' Long
<b>4' Centers</b> - Oak/Hardwood Posts	✓	
<b>6' Centers</b> - Oak/Hardwood Posts		✓





# HIGH VISIBILITY DELINEATION FENCE

**Barrier Fence / Tree Save**

Part# BFG / BFO



DELINEATION FENCE-BARRIER FENCE

## Structural Integrity – Durability

- Woven high-density polyethylene (HDPE) creates a more sustainable ultraviolet (UV) coloration and durable fabric
- Superior structural integrity due to unique method of attachment (sandwiching fabric between the post and a bonding strip)
- Available in **Orange** (Caution, warning, or danger)
- Available in **Green** (Water bodies and environmentally sensitive areas)

**AVAILABLE IN PRE-STAKED 100 LINEAR FT ROLLS ON 8 FT CENTERS**



# R100A FRAME & FILTER ASSEMBLY

## Round Base 60"



**Round Base 60"**

- ✓ Reusable high molecular weight polyethylene frame, replaceable filters
- ✓ Structural design for concentrated flow
- ✓ Fast, simple installation
- ✓ No failures due to stakes in uncompacted soil
- ✓ Consistent performance
- ✓ Practical, functional and economical

Structural Integrity – Stormwater Release – Sediment Retention

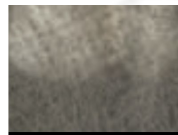


**Two Replaceable Filter Options**



### 2 STAGE DOT Filter

- Superior sediment filtration in slurry conditions
- Stage 1 - Sediment filtration (exceeds 96% efficiency)
- Stage 2 - High flow fabric top for stormwater release
- High visibility top marks inlet location



Stage 1



Stage 2

### High Flow Filter

- Clear water flow of >1100 gpm/ft<sup>2</sup>
- Effective when high flow of water expected to prevent flooding
- Keeps trash & floatables out of pipe system

INLET PROTECTION





# R300B SPECIALTY ASSEMBLY

Frame and Filter Assembly Approved for DOT of Maryland and Virginia

Round Base 60"



Round Base 60"

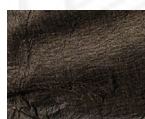
- ✓ Reusable high molecular weight polyethylene frame, replaceable filters
- ✓ Structural design for concentrated flow
- ✓ Fast, simple installation
- ✓ No failures due to stakes in uncompacted soil
- ✓ Consistent performance
- ✓ Practical, functional and economical

Structural Integrity – Stormwater Release – Sediment Retention

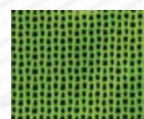
## R300B - 2 Stage DOT Specialty Filter Approved for Maryland and Virginia



- Superior sediment filtration in slurry conditions
- Stage 1 - Sediment filtration (exceeds 96% efficiency)
- Stage 2 - High flow fabric top for stormwater release
- High visibility top marks inlet location



Stage 1



Stage 2

INLET PROTECTION



## S200A FRAME & FILTER ASSEMBLY

# Square Base 62" X 62"



**Square Base 62" X 62"**

- ✓ Reusable high molecular weight polyethylene frame, replaceable filters
- ✓ Structural design for concentrated flow
- ✓ Fast, simple installation
- ✓ No failures due to stakes in uncompacted soil
- ✓ Consistent performance
- ✓ Practical, functional and economical

Structural Integrity – Stormwater Release – Sediment Retention



**Two Replaceable Filter Options**

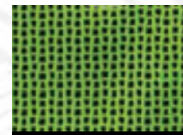


### 2 STAGE DOT Filter

- Superior sediment filtration in slurry conditions
- Stage 1 - Sediment filtration (exceeds 96% efficiency)
- Stage 2 - High flow fabric top for stormwater release
- High visibility top marks inlet location



Stage 1



Stage 2

### High Flow Filter

- Clear water flow of >1100 gpm/ft<sup>2</sup>
- Effective when high flow of water expected to prevent flooding
- Keeps trash & floatables out of pipe system

INLET PROTECTION





# S400B SPECIALTY ASSEMBLY

Frame and Filter Assembly Approved for DOT of Maryland and Virginia

Square Base 62" X 62"

INLET PROTECTION



Square Base 62" X 62"

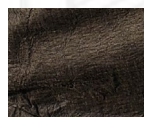
- ✓ Reusable high molecular weight polyethylene frame, replaceable filters
- ✓ Structural design for concentrated flow
- ✓ Fast, simple installation
- ✓ No failures due to stakes in uncompacted soil
- ✓ Consistent performance
- ✓ Practical, functional and economical

Structural Integrity – Stormwater Release – Sediment Retention

## S400B - 2 Stage DOT Specialty Filter Approved for DOT of Maryland and Virginia



- Superior sediment filtration in slurry conditions
- Stage 1 - Sediment filtration (exceeds 96% efficiency)
- Stage 2 - High flow fabric top for stormwater release
- High visibility top marks inlet location



Stage 1



Stage 2



# A700A FRAME & FILTER ASSEMBLY

## Rectangle Base 38" X 57"



Rectangle Base 38" X 57"

- ✓ Reusable high molecular weight polyethylene frame, replaceable filters
- ✓ Structural design for concentrated flow
- ✓ Fast, simple installation
- ✓ No failures due to stakes in uncompacted soil
- ✓ Consistent performance
- ✓ Practical, functional and economical

Structural Integrity – Stormwater Release – Sediment Retention

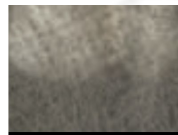


Two Replaceable Filter Options

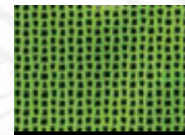


### 2 STAGE DOT Filter

- Superior sediment filtration in slurry conditions
- Stage 1 - Sediment filtration (exceeds 96% efficiency)
- Stage 2 - High flow fabric top for stormwater release
- High visibility top marks inlet location



Stage 1



Stage 2

### High Flow Filter

- Clear water flow of >1100 gpm/ft<sup>2</sup>
- Effective when high flow of water expected to prevent flooding
- Keeps trash & floatables out of pipe system

INLET PROTECTION





# A1000A FRAME & FILTER ASSEMBLY

## Square Base 36" X 36"



Square Base 36" X 36"

- ✓ Reusable high molecular weight polyethylene frame, replaceable filters
- ✓ Structural design for concentrated flow
- ✓ Fast, simple installation
- ✓ No failures due to stakes in uncompacted soil
- ✓ Consistent performance
- ✓ Practical, functional and economical

Structural Integrity – Stormwater Release – Sediment Retention

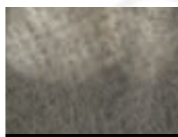


Two Replaceable Filter Options

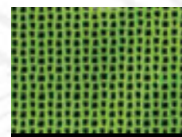


### 2 STAGE DOT Filter

- Superior sediment filtration in slurry conditions
- Stage 1 - Sediment filtration (exceeds 96% efficiency)
- Stage 2 - High flow fabric top for stormwater release
- High visibility top marks inlet location



Stage 1



Stage 2

### High Flow Filter

- Clear water flow of >1100 gpm/ft<sup>2</sup>
- Effective when high flow of water expected to prevent flooding
- Keeps trash & floatables out of pipe system

INLET PROTECTION



# A1100A FRAME & FILTER ASSEMBLY

## Square Base 48" X 48"



Square Base 48" X 48"

- ✓ Reusable high molecular weight polyethylene frame, replaceable filters
- ✓ Structural design for concentrated flow
- ✓ Fast, simple installation
- ✓ No failures due to stakes in uncompacted soil
- ✓ Consistent performance
- ✓ Practical, functional and economical

Structural Integrity – Stormwater Release – Sediment Retention

INLET PROTECTION



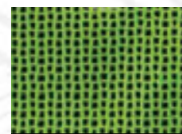
Two Replaceable Filter Options

### 2 STAGE DOT Filter

- Superior sediment filtration in slurry conditions
- Stage 1 - Sediment filtration (exceeds 96% efficiency)
- Stage 2 - High flow fabric top for stormwater release
- High visibility top marks inlet location



Stage 1



Stage 2

### High Flow Filter

- Clear water flow of >1100 gpm/ft<sup>2</sup>
- Effective when high flow of water expected to prevent flooding
- Keeps trash & floatables out of pipe system







# LPR500 FRAME & FILTER ASSEMBLY

**Low Profile Rectangle 30" X 46" X 16"**



- ✓ Reusable high molecular weight polyethylene frame, replaceable filters
- ✓ Structural design for concentrated flow
- ✓ Fast, simple installation
- ✓ No failures due to stakes in uncompacted soil
- ✓ Consistent performance
- ✓ Practical, functional and economical

**Low Profile for Non-sump use**  
**Rectangle 30" X 46" X 16"**

Structural Integrity – Stormwater Release – Sediment Retention

## LPR500A High Flow Filter ONLY



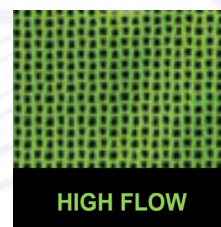
**LPR500A-HF**

**High Flow Mesh**  
Frame size 30" x 46" x 16"

- Clear water flow of >1100 gpm/ft<sup>2</sup>
- Sediment filtration through rock bags
- Prevents flooding with high flow of water
- Keeps trash & floatables out of pipe system
- For non-sump conditions



Non-Woven  
Rock Bag



HIGH FLOW

INLET PROTECTION NON-SUMP



# LPS600 FRAME & FILTER ASSEMBLY

**Low Profile Square 42" X 42" X 16"**



**Low Profile for Non-sump use  
Square 42" X 42" X 16"**

- ✓ Reusable high molecular weight polyethylene frame, replaceable filters
- ✓ Structural design for concentrated flow
- ✓ Fast, simple installation
- ✓ No failures due to stakes in uncompacted soil
- ✓ Consistent performance
- ✓ Practical, functional and economical

Structural Integrity – Stormwater Release – Sediment Retention

## LPS600A High Flow Filter ONLY



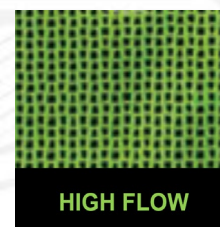
**LPS600A-HF**

**High Flow Mesh**  
Frame size 42" x 42" x 16"

- Clear water flow of >1100 gpm/ft<sup>2</sup>
- Sediment filtration through rock bags
- Prevents flooding with high flow of water
- Keeps trash & floatables out of pipe system
- For non-sump conditions



Non-Woven  
Rock Bag



HIGH FLOW

INLET PROTECTION NON-SUMP





# A1200A FRAME & FILTER ASSEMBLY

## Round Base 38"



**Round Base 38"**

- Designed for smaller drains, such as yard inlets, golf course drains, landscape drains, beehive drains, and drywells that are 30" or less.
- Reusable high molecular weight polyethylene frame with replaceable filters.
- Consistent performance retaining sediment from concentrated flow.
- Can help prevent filling of drywells with sediment and leaves.
- Fast, simple installation.

Structural Integrity – Stormwater Release – Sediment Retention



**Two Replaceable  
Filter Options**



### 2 STAGE Filter

- Superior sediment filtration in slurry conditions
- Used during construction to keep sediment out of drains and small inlets.
- Stage 1 - Sediment filtration (exceeds 96% efficiency)
- Stage 2 - High flow fabric top for stormwater release
- High visibility top marks inlet location



Stage 1



Stage 2

### High Flow Filter

- Keeps trash, grass & floatables out of pipe system
- Clear water flow >1100 gpm/ft<sup>2</sup>
- Effective when high flow of water is expected to help prevent flooding

YARD / LANDSCAPE INLET PROTECTION

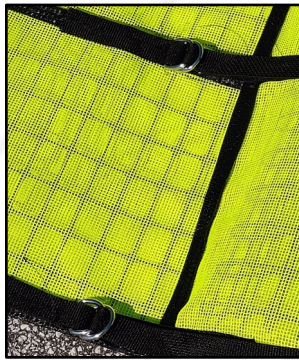


# PEDESTAL INLET WRAP

Flexible Inlet Protection for Pedestal Top Inlets



Internal grid provides structural support



"D" rings secure pedestal wrap to inlet



**16'6" long to accommodate maximum 60" inlet diameter**

## Flexible Inlet Protection for Pedestal Top Inlets

- Prevents trash and floatables from entering raised surface inlets while providing passage of stormwater into drainage system
- Reusable, durable, lightweight design of high flow geotextile
- Fast and simple installation – wrap inlet and fasten belts with "D" rings
- Internal grid provides structural support
- Requires no stakes
- Can accommodate round or square pedestal top inlet

PEDESTAL INLET PROTECTION





# SS 300 CURB INLET FILTER

Curb Inlet Protection



Use multiple SS 300s for large inlet openings  
Create adjustable weir with ends containing sand or stone bags.

Kit Includes: SS 300 Curb Inlet Filter filled with pine straw  
2 sandbag inserts  
Zip ties  
(#57 stone / sand not included)



Single SS 300s for 5' inlet opening  
Use of center weir recommended

## Structural Integrity – Stormwater Release – Sediment Retention

- Place in front of curb inlet or opening to prevent migration of sediment into storm drain system
- Pine straw wrapped in high flow-high visibility polyester green mesh with pockets for weighted bags on each end
- Biodegradable core materials offer an environmentally friendly alternative to recycled rubber / wire materials that can pollute our waterways
- Pine straw filling resists absorption of storm water and maintains shape.
- Flexible, light weight for easy shipping, hauling and installation. When filled with stone or sand, weighted bags keep filter in place and provide weir as needed





# PIPE STOPPER

Pipe Inlet Protection

Horizontal pipe device installed during construction prevents entry of sediment and floatables while allowing passage of stormwater



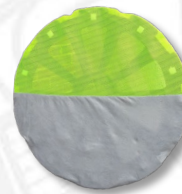
Friction fingers clip into HDPE, Concrete, or Metal Corrugated Pipe

Available plate sizes and filters				
Inside Dimension of Pipe	High Flow	2 Stage 50/50 Filter	2 Stage Filter	*2 Stage Specialty Filter VA & MD
12"			●	●
15"	●		●	●
18"	●	●	●	●
24"	●	●	●	●
30"	●	●	●	●
36"				●



High Flow Filter

100% high flow green mesh



2 Stage 50/50 Filter

50% high flow green mesh  
50% nonwoven (>96% efficiency) filter



2 Stage Filter

75% high flow green mesh  
25% nonwoven (>96% efficiency) filter

\*Specialty filter available for VA & MD



- Reusable HDPE frame with replaceable filter options
- Fast, easy installation and removal
- Designed for inlet side of pipe only

PIPE INLET PROTECTION

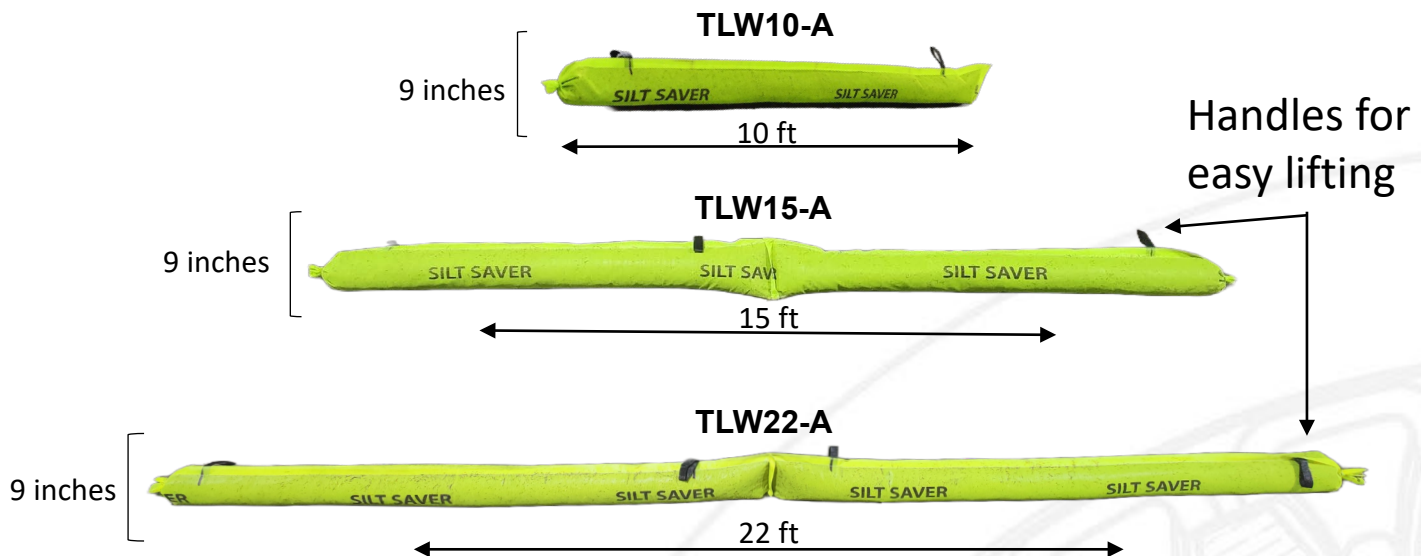




# TRAVEL LANE WATTLE

High Visibility Sediment Log

Curb inlet protection, slope erosion control & stream protection



- ▶ Reusable sediment control device
- ▶ **Pine straw wrapped in high flow-high visibility polyester green mesh**
- ▶ Biodegradable natural core offers an environmentally safe alternative to recycled rubber / wire materials that can pollute our waterways
- ▶ Pine straw core prevents mold and compaction often associated with traditional wheat straw wattles that can lead to ponding effects
- ▶ Light weight and easily moved to allow traffic bypass

WATTLES



# CHIP10 WATTLE

Weighted Chip Wattle

## CHIP10-WB



## CHIP10-GR



Nominal 9 inches diameter X 10 feet in length

### Velocity dissipation and sediment retention

- ▶ Filled with kiln dried pine chips – Biodegradable natural core offers an environmentally safe alternative to recycled rubber / wire materials that can pollute our waterways
- ▶ Dry weight nominal 58 lbs (weigh less for shipment and installation)
- ▶ Wet weight nominal 145 lbs (stays in place)
- ▶ Kiln dried chips expand when wet. (keeps shape)
- ▶ Option of two durable sleeves:
  - ▶ High visibility green polypropylene mesh
  - ▶ Black woven geotextile fabric
- ▶ Convenient handles for easy lifting

WATTLES





# COMPRESSION TUBE

Weighted Chip Wattle



Kit includes  
one 5' compression tube  
and two compression stakes

**Nominal 5 feet in length by 9 inches in diameter**



## Velocity dissipation and sediment retention

- Polypropylene sleeve filled with kiln dried pine chips (biodegradable / weed and seed free)
- Environmentally friendly alternative to recycled rubber / wire materials
- Durable sleeve with handles for easy application and removal
- Compression stakes apply downward pressure to prevent undermining
- Dry weight nominal 30 lbs (weigh less for shipping and installation)
- More than doubles weight when wet (stays in place)
- Kiln dried chips expand when wet (keeps shape)





# HIGH VELOCITY DITCH CHECK

\*\*\*\*Patent Pending\*\*\*\*

Pre-assembled Check Dam



Front water seal with compression tubes and stakes

- Temporary barrier slows velocity of channel stormwater and facilitates controlled stormwater release through the fabric onto the rear scour guard

- Preassembled and sold as a kit to ensure quality control and consistency of installation. Includes:
  - Velocity restrictor sheet prefabricated with posts
  - Attached front water seal and rear scour guard
  - Additional rear scour guard extension
  - Compression tubes with compression stakes

- Prefabricated and contoured to conform to the angles of ditch slopes – prevents bypass and provides strength to withstand channel flow

- Velocity restrictor sheet made from green mesh allows floatables to contribute to filtration of stormwater

- Pine chip filled compression tubes held in place with compression stakes prevent undermining

- **More effective, less costly, and less maintenance than traditional rock check dam**



Rear scour guard



Natural floatables contribute to filtration on green mesh of velocity restrictor sheet



DITCH CHECK





# LOW VELOCITY DITCH CHECK

\*\*\*\*Patent Pending\*\*\*\*

**PRE-ASSEMBLED CHECK DAM**



## Kit includes:

1. Low Velocity Ditch Check with attached front water seal and rear scour guard
2. 3 compression stakes
3. 16 sod staples

## Structural Integrity – Stormwater Release – Sediment Retention

- Designed as a temporary barrier to slow the velocity of channel stormwater
- Resists undermining associated with traditional wattles used in this capacity
- A multi-component system consisting of:
  - a durable woven geotextile sleeve filled with kiln dried pine chips
  - an underlying attached front water seal and rear scour guard to prevent undermining
  - compression stakes and sod staples to maintain placement
- Preassembled and sold as a kit to ensure quality control and ease as well as consistency of installation
- **More effective, lower cost, and less maintenance than traditional LOW VELOCITY rock check dams**

DITCH CHECK





# BOTTOM DRAIN ATTACHMENT ASSEMBLY

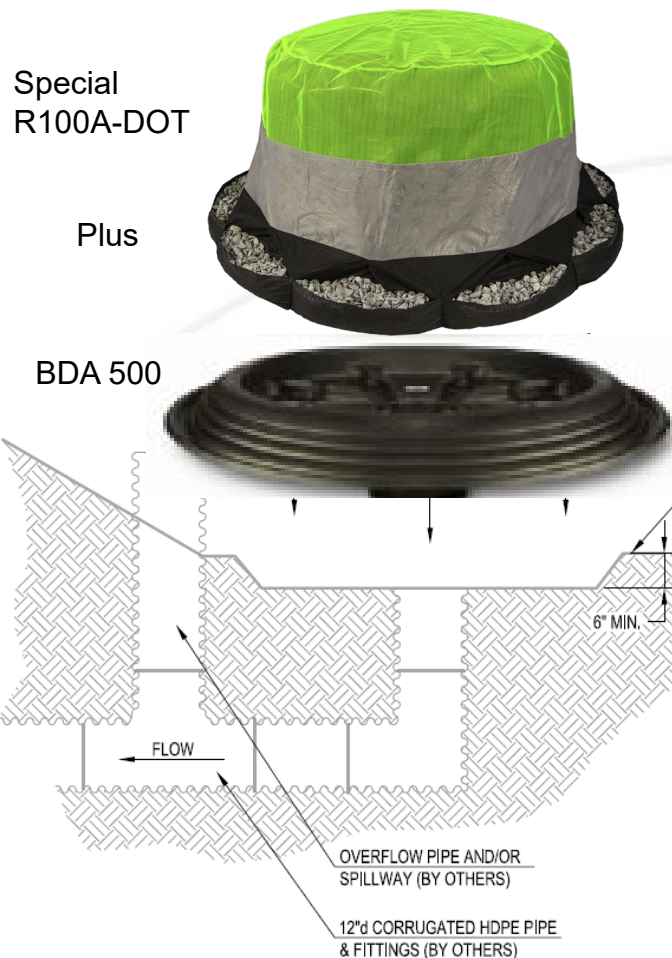
## BDA 500 Assembly

### Creates an Enclosed Stormwater Filter System



12" HDPE pipe and elbows are not sold by Silt Saver.

- BDA Assembly creates a tiered temporary retention system
- May be used for construction sites that do not have space for larger retention ponds
- May be used individually or connected in series for linear job sites such as pipelines or transmission lines



Off Site Flow  
←



ENCLOSED STORMWATER FILTRATION SYSTEM





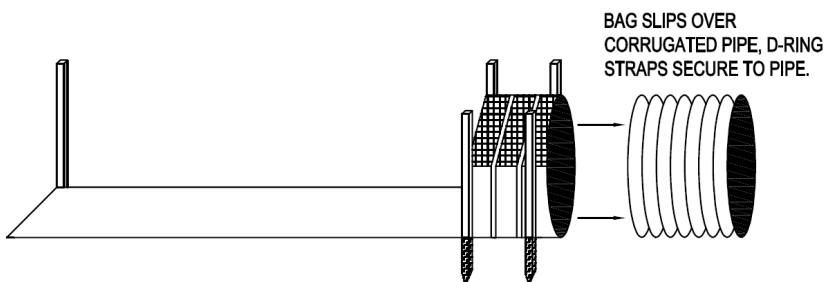
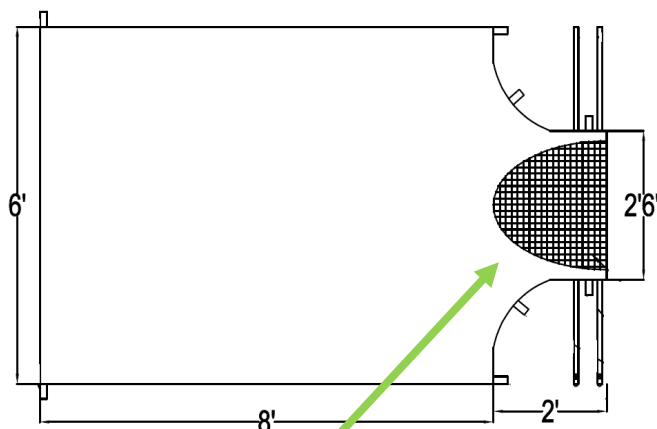
# SLOPE DRAIN BAG

## Sediment Collection



Part# SDB

**Green mesh is for emergency storm water overflow**



Kit includes 7 stakes

### Structural Integrity – Stormwater Release – Sediment Retention

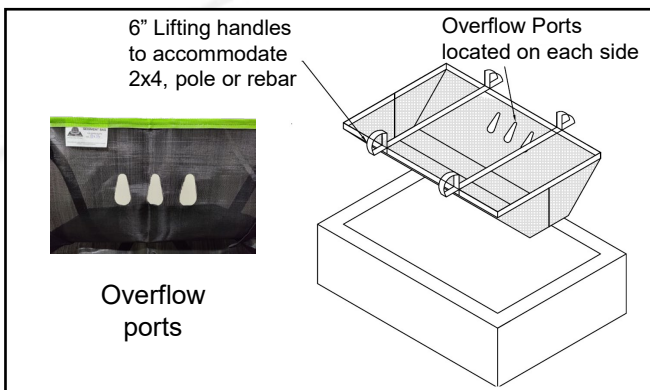
- Attaches to temporary slope drain for sediment collection
- Designed to fit 12" or smaller HDPE slope drainpipe.
- Built in emergency stormwater overflow, reduces force on the bag and slope drain system
- D-ring straps, stake loops and 7 stakes are used to secure the bag in place
- For use on construction sites, power plants, dredging areas and more to protect surrounding streams, property, and storm sewers

SEDIMENT COLLECTION



# UNDER GRATE SEDIMENT BAG

## Sediment Collection



### Available Sizes

18"x36", 21"x29", 24"x24", 24"x36", 24"x48", 27"x27", 28"x36", 36"x36", 36"x48", 40"x55"

### Designed for under grate sediment collection

- Filters sediment and construction debris out of stormwater to reduce costly basin and pipe system cleaning
- 40 sieve woven polypropylene geotextile allows water filtration and sediment retention
- Built in overflow ports prevent flooding during rain events
- UV resistant, durable and reusable
- Handles and load supporting harness for easy installation / removal / cleaning and replacement
- Hangs unobtrusively under stormwater grates – does not impede traffic above
- High visibility green edging is easily seen by workers and inspectors to show sediment protection in place





# DEWATERING BAG

Sediment Collection



## Available Sizes

**8 oz - 6' x 6' / 10' x 15' / 15' x 15'**

Structural Integrity – Stormwater Release – Sediment Retention

A high efficiency, high pressure filtration (pump) bag designed to collect sediment from collected water in construction site dewatering applications and pipelines

- Custom designed neck with D-ring tie straps provides secure hose attachment to a variety of pump hose sizes up to 6"
- Protects surrounding streams, property, and storm sewers
- Prevents erosion



# UNDER GRATE CITY BAG

Stormwater Grate Trash Collection

TRASH COLLECTION



Easy trash removal



**Hangs under stormwater grates to collect trash / floatables from parking lots and city streets**

## Available Sizes

12"x48", 21"x29", 24"x 24", 24"x48", 27"x27", 28"x36", 36"x36", 40"x55"

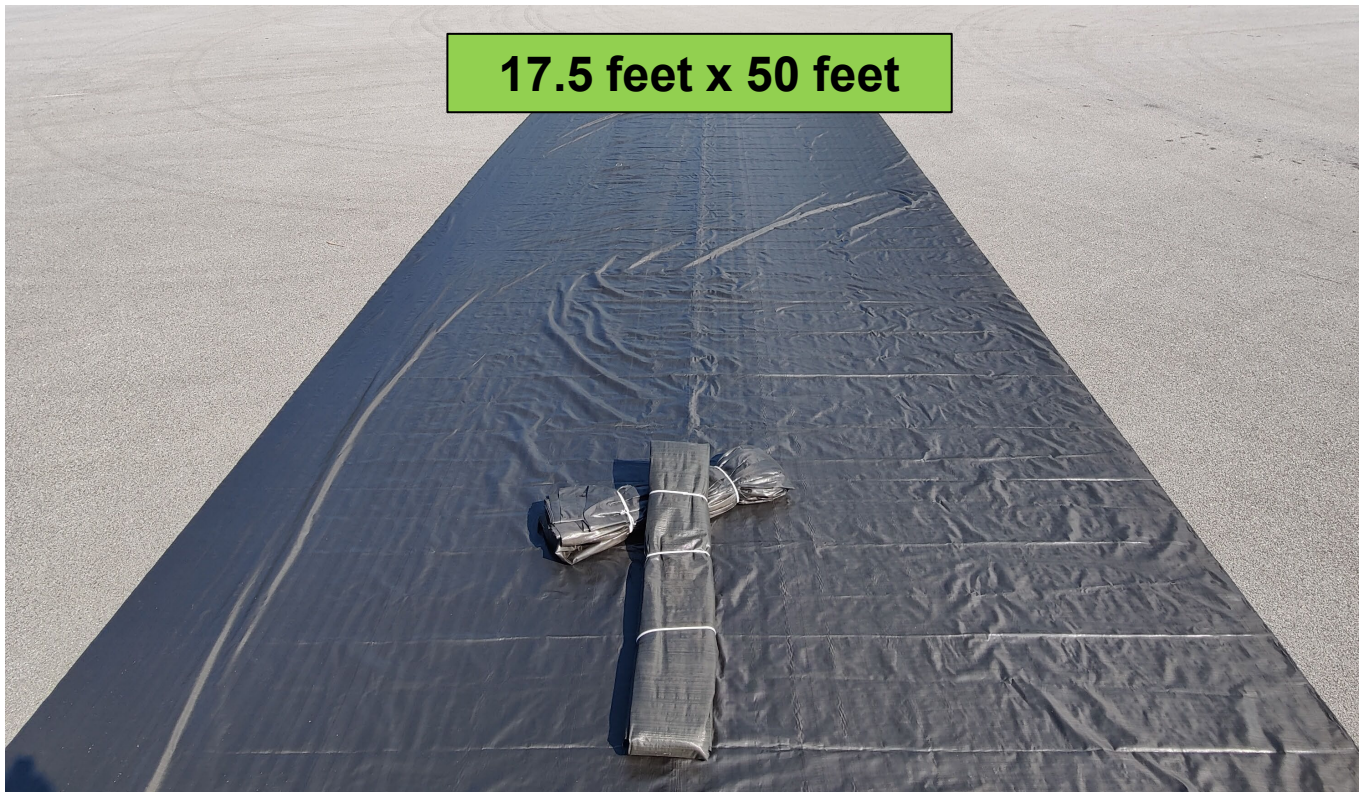
- Perfect for use during festivals / parades / street parties to catch floatables and street trash preventing debris from entering stormwater drains
- Reusable with integrated handles for easy installation, removal, cleaning and replacement
- High flow mesh (9x9 scrim, clear water flow of  $>1100$  gpm/ft<sup>2</sup>) allows water filtration and overflow ports prevent flooding during heavy rain events
- Hangs unobtrusively under storm water grate – does not impede traffic





# DRIVEWAY MAT

Construction Entry / Exit



Part# D-600

To be used under  
stone as construction  
entrance/exit

- Designed for use during construction in entry / exit
- Woven 200 lb. geotextile fabric
- Creates a stabilizing layer between gravel and underlying dirt
- Reduces the amount of gravel required for installation and maintenance resulting in reduction of labor and overall cost

CONSTRUCTION ENTRY / EXIT



# Webinar Program

## Silt Saver offers monthly webinars on our performance-based erosion and sediment control products.

Join us to learn about Silt Saver products that use innovative best management practices to solve traditional erosion and sediment control problems.

### Webinar #1



#### Webinar 1

##### Performance based silt fence products.

##### Syllabus:

- Illustration of known issues with traditional silt fence systems
- Demonstration of WBSF technology and how it provides reinforced silt fence with enhanced structural integrity
- Explanation of 2-Stage technology and its application to create a unique silt fence with stormwater release
- Discussion of BSRF - its superior balance of sediment retention and structural integrity

Speaker: Dave Goff

Position: Sales Manager

### Webinar #2



#### Webinar 2

##### Reusable inlet protection frame and filters

##### Syllabus:

- Illustration of known issues with traditional inlet protection BMPs.
- Explanation of 2-Stage technology as it is applied to inlet protection
- Installation and application of Silt Saver's inlet protection frame & filters to solve sediment control issues
- Overview of other Silt Saver erosion and sediment control products to complete your site management

Speaker: Dave Goff

Position: Sales Manager

PDH Available: A Certificate of Completion is available upon request. Please check your local requirements for PDH eligibility.

## Register Now!

<https://siltsaver.com/events/>